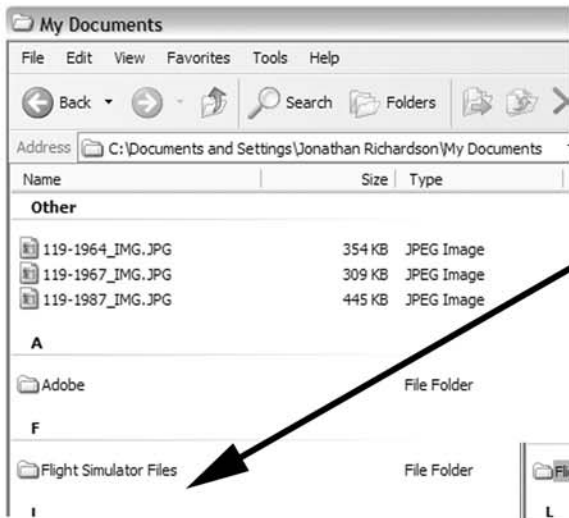
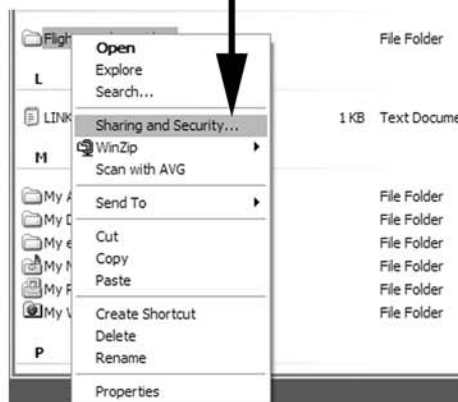


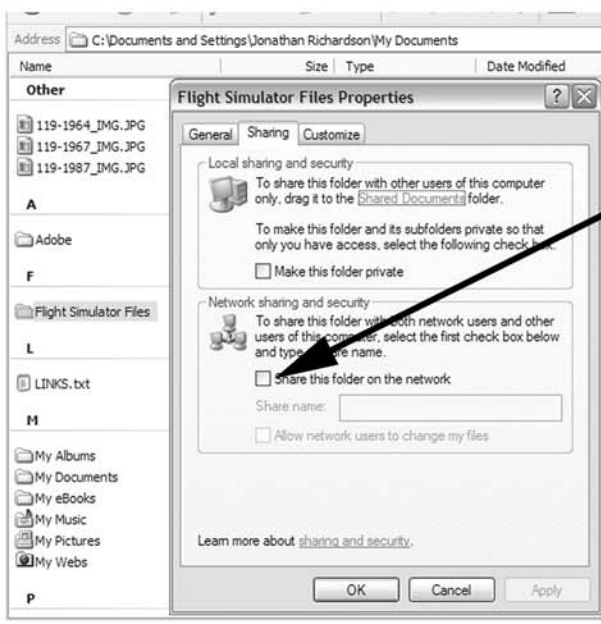
The following procedure is to be followed to enable the Glass Cockpit to see Flight Plans that have been created with MSFS.



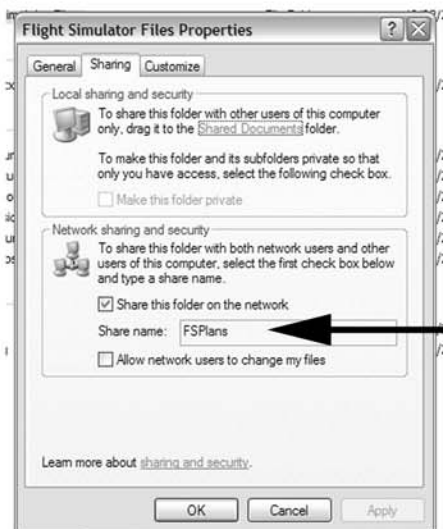
1 Example of usual path where FS saves Flight Plans. Locate this folder.



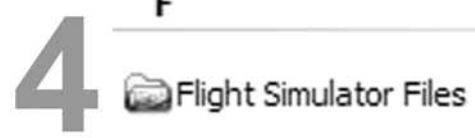
2 Right click Mouse. Click on Sharing & Security



3 Click on Share This Folder. Type in the Share Name box: FSPLANS



Your Flight Simulator folder will now have a small hand on it indicating that it is shared.



The GC will now display the last saved FS flight plan on the ND.